

CR^{Series}

Door Hardware

Door Coordinators



Klacc*i*[®]
life unlocked.



Bar Coordinator





CR-32 / CR-42 / CR-52 / CR-60 / CR-72

Klacci's CR Series Bar Coordinators offer a simple yet effective way of regulating double door entries. These products guarantee a correct order of door closing and prevent that any entry that is not properly closed may cause a safety concern in case of emergency.

Features

- The lever mechanism on the active door side holds the active door open until a trigger mechanism releases it when the passive door closes.
- An adjustable override mechanism allows the active door to close first in case that an excessive force is applied on it to protect the door as well as the coordinator from further damage.
- These units are compatible with flush bolts, door closers and other double door hardware for a more complete application.

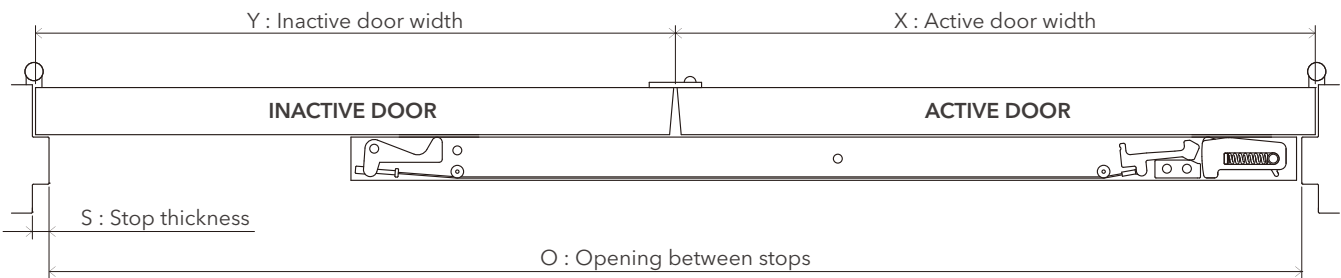
Certification/Compliance

- Conforms to ANSI/BHMA A156.3-2014 Type 21A (Grade 1).
- UL/cUL Fire Rated for 3-Hour Fire Door Hardware, conforms to UL10C.

Bar Coordinator Length

- The bar coordinator standard length should be equal to the active door's width (X) plus 1/2 the inactive door's width (Y).
- For cases where above condition cannot be met, the bar coordinator length must be at least 6" (152.4mm) longer than the active door width (X).
- The bar coordinator length must not exceed the overall frame opening between stops (O).

Note: Standard stop thickness (S) is of 5/8" (15.9mm).



Examples:

- | | |
|---|--|
| • Active door width (X): 42" (1066.8mm) | • Active door width (X): 36" (914.4mm) |
| Inactive door width (Y): 42" (1066.8mm) | Inactive door width (Y): 18" (457.2mm) |
| Recommended coordinator: CR-60 | Recommended coordinator: CR-42 |

Material

Aluminum

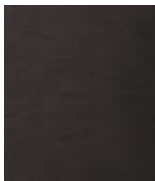
Finishes



628 (US28)
Satin Aluminum,
Clear Anodized



707 (US3)
Bright Brass
Anodized



711 (US19)
Flat Black
Anodized

Size

Model	Length	Width	Height
CR-32	32" (812.8mm)	1-5/8" (41.3mm)	5/8" (15.9mm)
CR-42	42" (1066.8mm)	1-5/8" (41.3mm)	5/8" (15.9mm)
CR-52	52" (1320.8mm)	1-5/8" (41.3mm)	5/8" (15.9mm)
CR-60	60" (1524.0mm)	1-5/8" (41.3mm)	5/8" (15.9mm)
CR-72	72" (1828.8mm)	1-5/8" (41.3mm)	5/8" (15.9mm)

Cutout Type Ordering Information

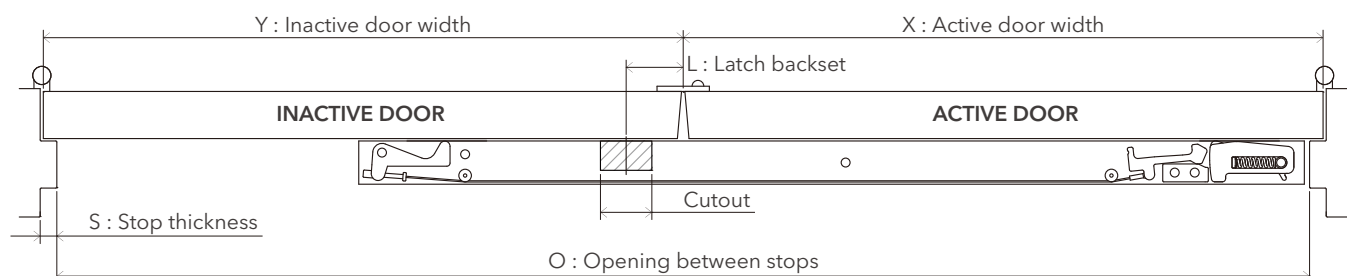
Bar coordinators may require an additional cutout in order to use with surface or concealed vertical rod exit devices. Please check the following chart for the type of cutout needed:

Cutout Type	Door Type	Exit Device Model	Latch backset	Latch Type	Door application
A-Type	Metal door	For Klaccki: 1300/F1300 F2300	2-3/4" (69.9mm)	Plunger Release	Pair of 30" (762.0mm) Doors (For CR-42) Pair of 36" (914.4mm) Doors (For CR-52) Pair of 42" (1066.8mm) Doors (For CR-60) Pair of 48" (1219.2mm) Doors (For CR-72) Pair of 56" (1422.4mm) Doors (For CR-72) Pair of 60" (1524.0mm) Doors (For CR-72)
		For VON DUPRIN: 98/9947 98/9948-F 33/3547 33/3548-F			
B-Type	Wood door	For Klaccki: 2300	1-5/16" (33.3mm)	Plunger Release	
		For VON DUPRIN: 98/9947WDC 98/9947WDC-F 33/3547WDC 33/3547WDC-F			
C-Type	Metal door	For VON DUPRIN: 8847-F 5547-F	2-3/8" (60.3mm)	Plunger Release Bracket	

Note: No applicable cutout type for CR-32.

If the product model or door application is not listed on the chart or a different latch backset dimension is used, please provide the following information when ordering:

1. Exit device's product model and manufacturer's template.
2. Active door width (X)
3. Inactive door width (Y)
4. Latch backset (L)
5. Stop thickness (S) if other than 5/8" (15.9mm)
6. Opening between stops (O)



Filler Bar



FLB-20 / FLB-32 / FLB-48

Features

The filler bar can be used to fill the gap between the end of the bar coordinator and the inactive door's stop for more pleasant aesthetics.

Ordering Information

The table on the right shows the standard matching between the bar coordinator and the filler bar.

If other lengths are required please specify before ordering.

Door Width	Bar Coordinator Model	Filler Bar Model
Pair of 24" (609.6mm) Doors	CR-32	FLB-20
Pair of 30" (762.0mm) Doors	CR-42	FLB-20
Pair of 36" (914.4mm) Doors	CR-52	FLB-20
Pair of 42" (1066.8mm) Doors	CR-60	FLB-32
Pair of 48" (1219.2mm) Doors	CR-72	FLB-32
Pair of 56" (1422.4mm) Doors	CR-72	FLB-48
Pair of 60" (1524.0mm) Doors	CR-72	FLB-48

Material

Aluminum

Finishes



628 (US28)
Satin Aluminum,
Clear Anodized



707 (US3)
Bright Brass
Anodized



711 (US19)
Flat Black
Anodized

Size

Model	Length	Width	Height
FLB-20	20" (508mm)	1-5/8" (41.3mm)	5/8" (15.9mm)
FLB-32	32" (812.8mm)	1-5/8" (41.3mm)	5/8" (15.9mm)
FLB-48	48" (1219.2mm)	1-5/8" (41.3mm)	5/8" (15.9mm)

Mounting Bracket



MB-1F



MB-3F



MB-2F

MB-1F / MB-2F / MB-3F

Features

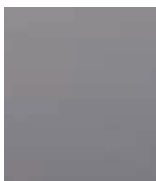
The mounting bracket can be installed along with fire-rated hardware, such as parallel arm closers and surface vertical rod exit devices, used for stop mounted hardware to be properly installed without damaging the bar coordinator.

Note: Stop mounted hardware will need to be lowered to compensate for the height of the Bar Coordinator and Mounting Brackets.

Material

Steel

Finishes



689 (US28)
Aluminum
Painted

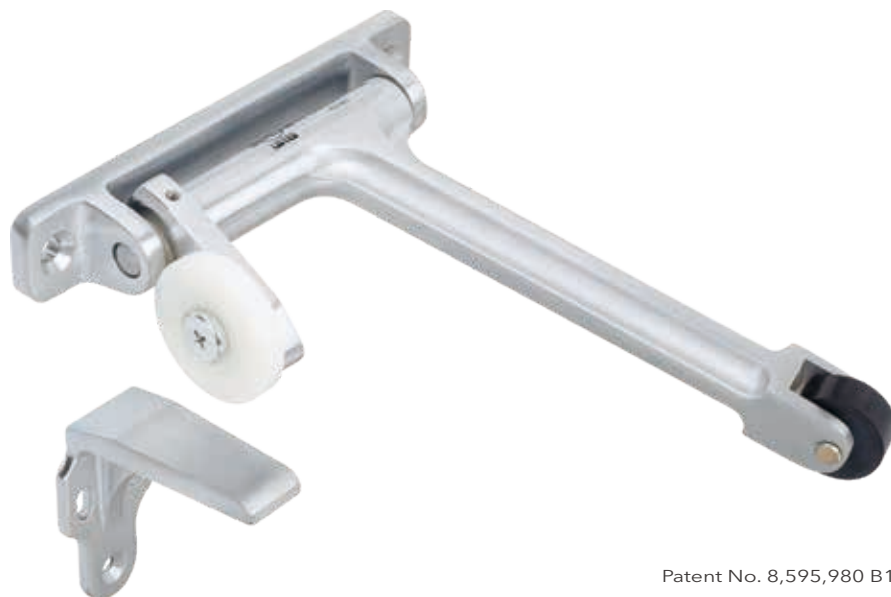


600 (USP)
Primed for
Painting

Size

Model	Length	Width	Height
MB-1F	4" (101.6mm)	3" (76.2mm)	1-5/8" (41.3mm)
MB-2F	4" (101.6mm)	4" (101.6mm)	1-5/8" (41.3mm)
MB-3F	4" (101.6mm)	3-1/2" (88.9mm)	1" (25.4 mm)

Gravity Coordinator



Patent No. 8,595,980 B1

CR-07 / CR-09

Features

- The gravity coordinator is applied on pair doors to allow the inactive door to close before the active door.
- Nylon and rubber rollers provide quiet and efficient operation and help protect the doors from damage.

Certification/Compliance

- Conforms to ANSI/BHMA A156.3-2014 Type 21B (Grade 2).
- UL/cUL Fire Rated for 3-Hour Fire Door Hardware, conforms to UL10C.

Astragal Location	Without Carry Open Bar		With Carry Open Bar	
	CR-07	CR-09	CR-07	CR-09
A No Astragal	1'6" ~ 4'0" (457.2mm ~ 1219.2mm)	2'6" ~ 4'0" (762mm ~ 1219.2mm)	1'6" ~ 2'6" (457.2mm ~ 762mm)	2'6" ~ 4'0" (762mm ~ 1219.2mm)
B Pull Side, Active Door (Standard)				
C Push Side, Inactive Door	1'6" ~ 3'4" (457.2mm ~ 1016mm)	2'6" ~ 4'0" (762mm ~ 1219.2mm)	N/A	N/A
D B + C				

Note: Astragal Overlap: 3/4" (19.1mm) - Standard.

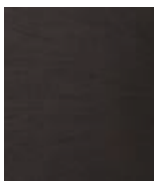
Material

Brass

Finishes



626 (US26D)
Satin Chrome

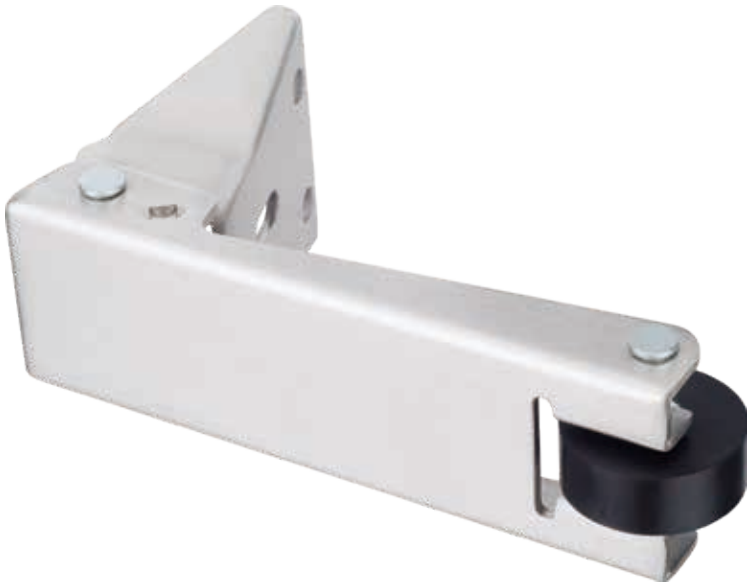


613 (US10B)
Dark Oxidized
Satin Bronze

Size

Model	Projection
CR-07	7" (177.8mm)
CR-09	9" (228.6mm)

Carry Open Bar



COB

Features

- When the inactive door is opened, the carry open bar provides the automatic opening of the active door as well.
- The carry open bar cannot be installed along with flush bolts.
- Door coordinator accessory for fire-rated application.

Certification/Compliance

- Conforms to ANSI/BHMA A156.3-2014 Type 21 (Grade 1).

Material

Stainless Steel

Finishes



630 (US32D)
Satin Stainless
Steel



613 (US10B)
Dark Oxidized
Satin Bronze

How to Order

Bar Coordinator

Ordering Example										
	CR-52	A	36"ACT	628	+ FLB-20	628	+ COB	630	+ MB-1F	689
Model										
CR-32			32" (812.8 mm)							
CR-42			42" (1066.8 mm)							
CR-52			52" (1320.8 mm)							
CR-60			60" (1524.0 mm)							
CR-72			72" (1828.8 mm)							
Cutout Type										
A			A-Type							
B			B-Type							
C			C-Type							
Blank			No Cutout							
Active Door Size (For Cutout Type)										
Must provide active door's width. (see page 4)										
Finish										
628 (US28)			707 (US3)	711 (US19)						
Filler Bar (Optional)										
FLB-20			20" (528 mm)							
FLB-32			32" (812.8 mm)							
FLB-48			48" (1219.2 mm)							
Finish										
628 (US28)			707 (US3)	711 (US19)						
Carry Open Bar (Optional)										
COB										
Finish										
613 (US10B)			630 (US32D)							
Mounting Bracket (Optional)										
MB-1F			Stop width 1-1/2" ~ 2-1/4" (38.1mm ~ 57.2mm)							
MB-2F			Stop width 2-3/8" ~ 3-1/4" (60.3mm ~ 82.6mm)							
MB-3F			Stop width over 3-3/8" (85.7mm)							
Finish										
600 (USP)			689 (US28)							

Gravity Coordinator

Ordering Example				
	CR-07	626	+ COB	630
Model				
CR-07	7" (177.8 mm)			
CR-09	9" (228.6 mm)			
Finish				
613 (US10B)	626 (US26D)			
Carry Open Bar (Optional)				
COB				
Finish				
613 (US10B)	630 (US32D)			

Warranty

Klacci ("Company") warrants to the original purchaser ("Purchaser") that the products manufactured and provided under the Klacci® brand shall be free of defects in material and workmanship under normal use and service as follows: (a) mechanical locks for 5 years; (b) electrified products for 1 year, and (c) finishes for 1 year. The Purchaser shall be obligated to store, transport, install, maintain and operate the products in accordance with good practice and reasonable maintenance works, and has followed specific instructions from the Company. Furthermore, the cost incurred in removing and installing a replacement product is not included in the warranty. Upon return of a defective product, Klacci may repair or replace the product.

The present warranty does not cover:

1. Scratches, abrasions, deterioration due to the use of paints, solvents and other chemicals.
2. Normal wear and tear.
3. Lack of proper maintenance.
4. Abuse or any damage caused by improper installation, sabotage or misuse of the product.
5. Improper storage, shipping and handling.
6. Failure to follow instructions or guidelines provided by the Company.

Klacci makes no representations or warranties concerning any modification or installation along with other brand products that can potentially impact its intended operation or cause malfunction. When retrofitting any portion of an existing fire rated opening, or specifying and installing a new fire-rated opening, please follow its installation instructions accordingly or consult with a code specialist or local code official (authority having jurisdiction) to ensure compliance with all applicable codes and ratings.

Note:

- The warranty becomes effective from the date of shipment.

Contents in this catalog are for reference and illustration only. Shipments subject to actual productions. Please consult factory for final discretion.

These products and systems are under patent protection, counterfeiting not allowed.



klacci[®]
life unlocked.



www.klacci.com

Headquarters and Operation Office

I-TEK Metal Manufacturing Co., Ltd.

18 Gungye 3rd Road, Annan, Tainan 70955, Taiwan.

T 886 6 3840722

F 886 6 3840715

E sd.klacci@gmail.com

sd@klacci.com

sd@iteklock.com.tw

Global Office

KLACCI Inc.

10640 East 59th Street, Suite 100,
Indianapolis, Indiana 46236, USA

T +1 (720) 675-5677

E sd@klacci.com

sd.klacci@gmail.com